

Langley Vale Solar Farm and BESS Factsheet

Overview

Elgin Energy is proposing to build a solar and battery energy storage system (BESS) project in Lerida, located 5km southeast of Gunning, NSW. The development would capture energy from the sun and store it, producing and supplying clean power to the national energy grid both day and night.

The Project would have a generating capacity of approximately 250 MW (AC) and would include a BESS with a capacity of up to 500 MW (AC) with four-hour duration.

The Project

The Langley Vale Solar Farm and BESS will use the latest solar and BESS technology and meet strict Australian safety and environmental standards. Its design will comply with state planning laws and be carefully planned to reduce environmental, cultural heritage and neighbour impacts.

Construction and operation of the 250 MW Solar Farm and BESS would include the following key components:

- PV modules
- Battery containers
- Trackers
- Piles
- Inverters
- Transformers
- Access roads
- Underground and above ground cables
- Onsite substation
- Associated operational facilities.

During construction, temporary facilities will be needed, including site offices, staff amenities, storage sheds, car parking, laydown areas for components, and spaces for trucks to park and unload.

The benefits



Investment in the local community

Community input will guide how the Langley Vale Solar Farm and BESS directs funding to local projects and initiatives, helping ensure long-term positive outcomes for the region.



Creates clean green energy

A project of this size would produce enough clean, solar energy to power up to 110,000 NSW homes.



Stores energy to stabilise the network

The BESS would enable energy storage for use during peak demand or low sunlight periods, improve grid stability, and maximise the value of the solar generation.



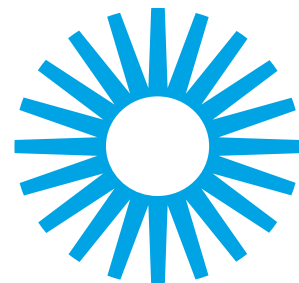
Solar and sheep grazing

Elgin Energy is exploring the opportunity for Agrisolar practices - meaning that sheep grazing can continue on the site while the project is operational.



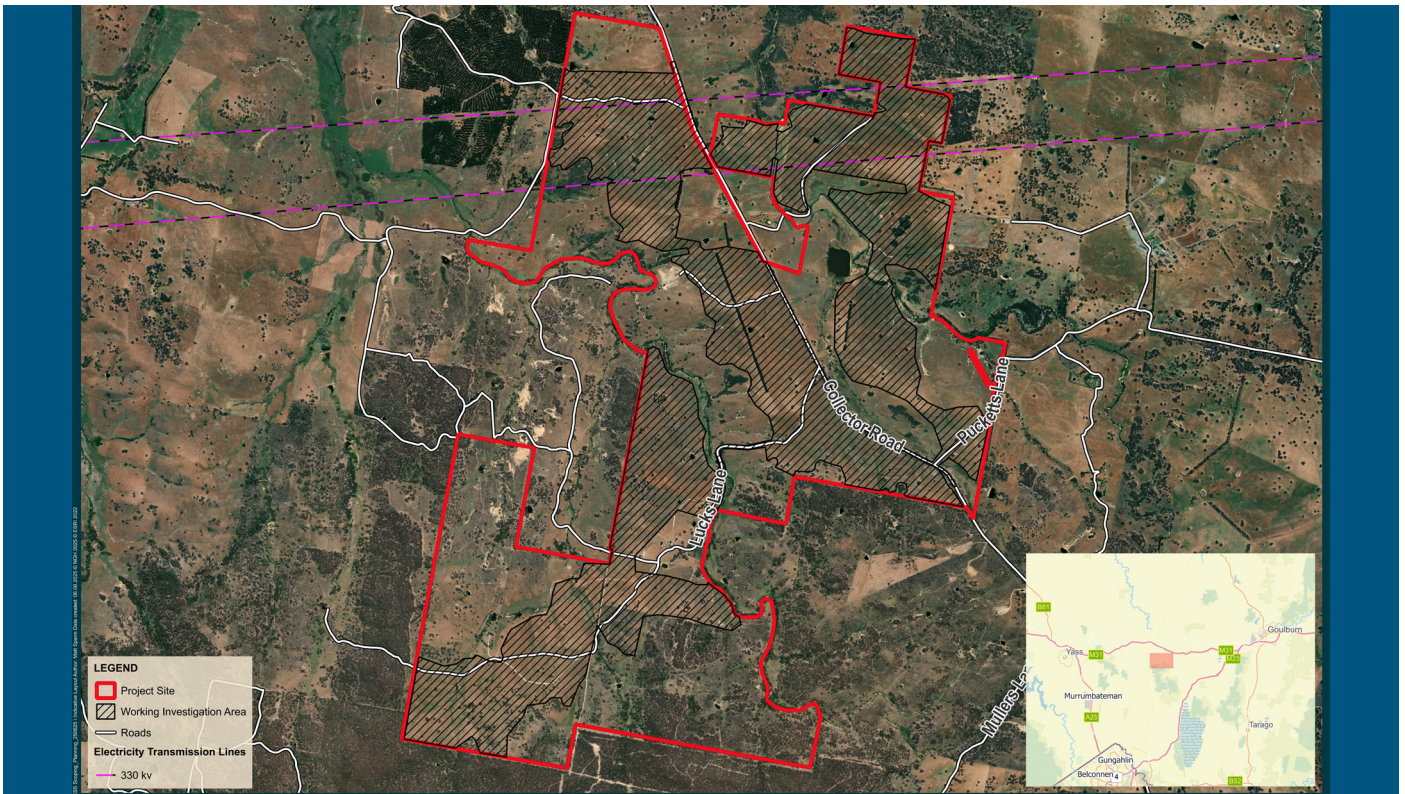
Creates jobs

Approximately 300 full time equivalent (FTE) construction jobs will be generated by the project, along with approximately 1-3 FTE jobs once it becomes operational.



Langley Vale Solar Farm and BESS indicative site map

The proposed Project area is about 1,143 hectares (ha) and is where studies and investigations will take place to help shape the final design. We expect that the final development footprint will be less than 600 ha. The Project will connect to an existing 330 kV transmission line, meaning no new high-voltage power lines are needed.



The planning and approval process

The proposed Langley Vale Solar Farm and BESS is at the very start of the NSW Department of Planning, Housing and Infrastructure's (DPHI) approval process, known as the Scoping Phase. At this early stage, a Scoping Report is prepared to help identify which technical studies will be needed for the Environmental Impact Statement (EIS).

About Elgin Energy

Elgin Energy is a global leader in large-scale solar and battery storage projects. Headquartered in Dublin and backed by Copenhagen Infrastructure Partners, Elgin has delivered over 1 GW of ready-to-build projects and has a 15 GW+ pipeline across the UK, Europe, and Australia.

In Australia, Elgin is advancing several hybrid solar and battery projects, including the 150 MW Elaine Solar Farm and the approved 330 MW Barwon Solar Farm in Victoria, as well as projects in New South Wales such as the approved 80 MW Glanmire Solar Farm, located near Bathurst.

Questions and feedback

Input from the community will help to inform the Project and formulate the assessments that will be undertaken for the EIS.

For more information and to register to receive Project updates and to provide feedback, please contact us at:

Website: <https://langleyvalesolarfarm.com.au/>
Email: engage@nghengage.com.au

